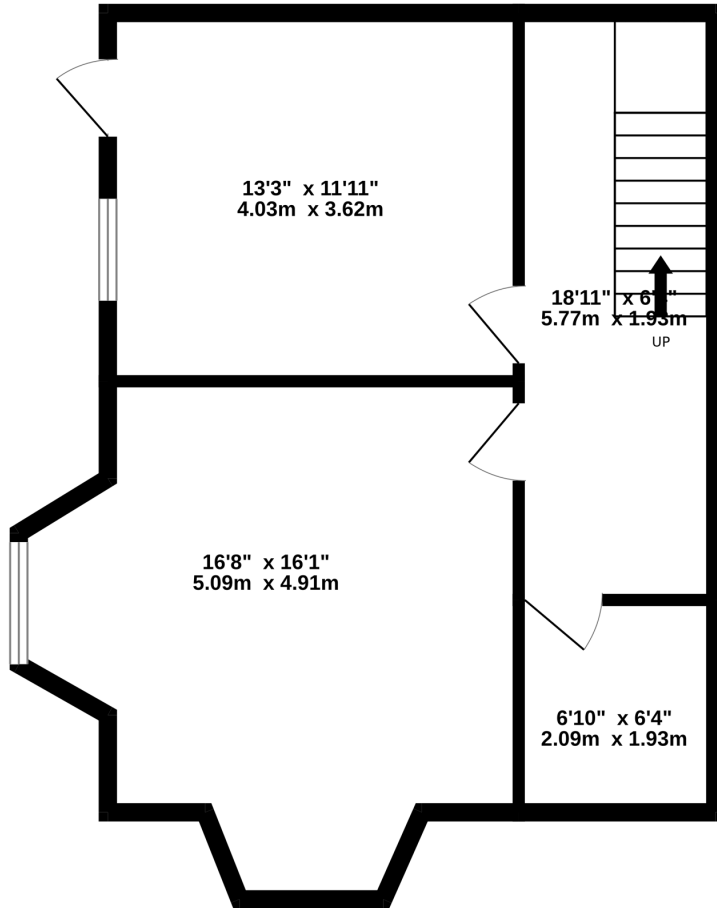
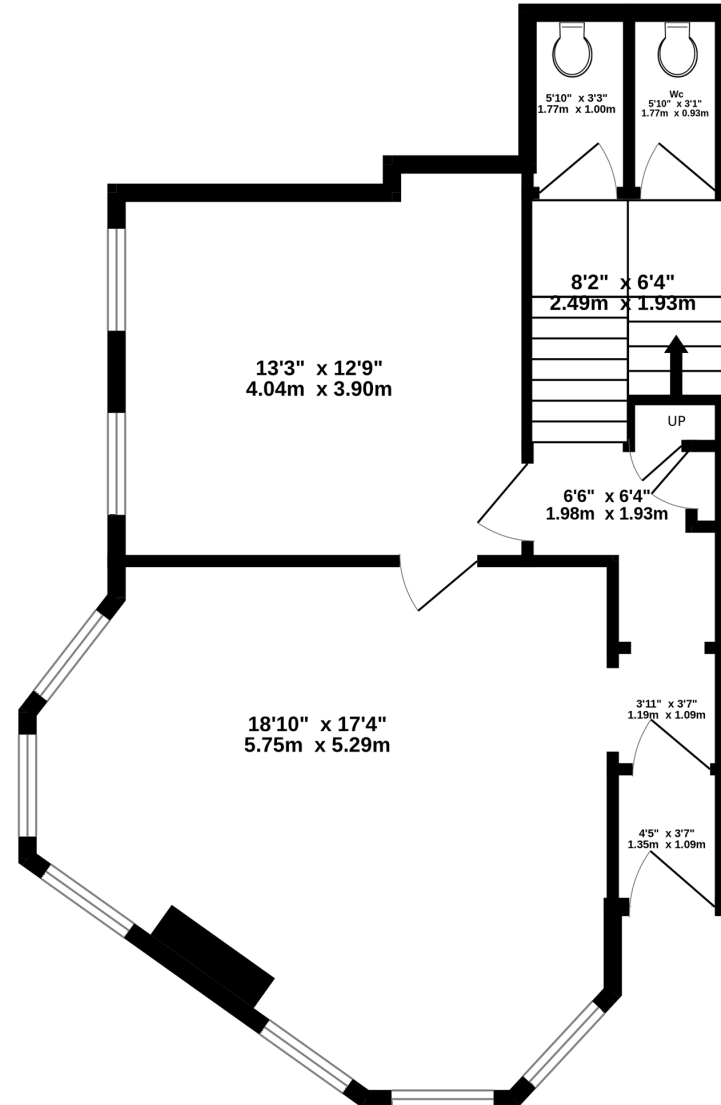


Basement
537 sq.ft. (49.9 sq.m.) approx.



Ground Floor
579 sq.ft. (53.8 sq.m.) approx.



TOTAL FLOOR AREA : 1116 sq.ft. (103.7 sq.m.) approx.

Measurements are approximate. Not to scale. Illustrative purposes only
Made with Metropix ©2025