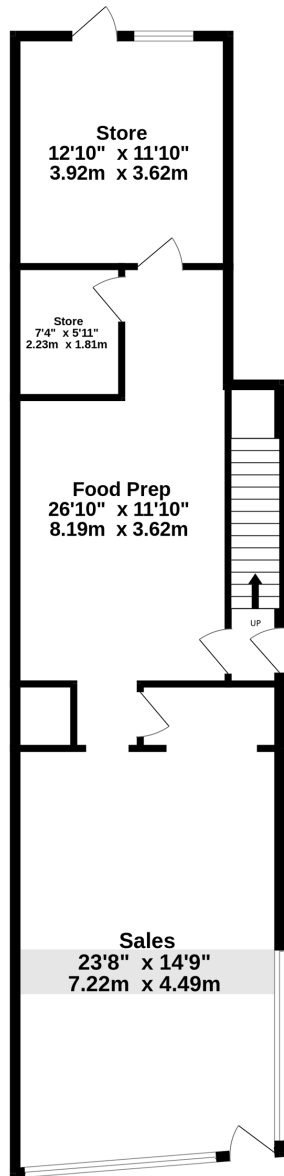
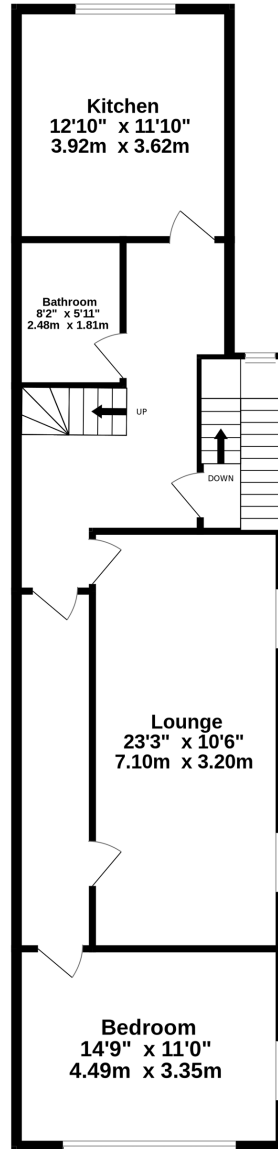


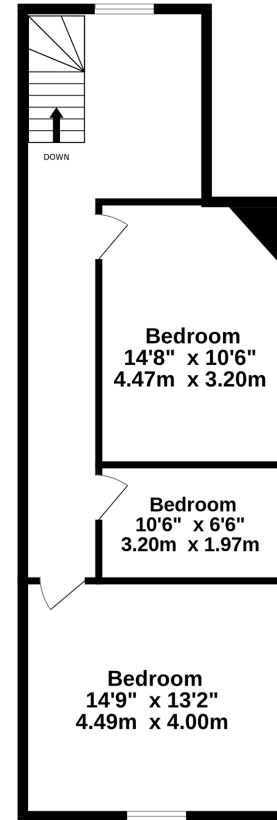
Ground Floor  
870 sq.ft. (80.8 sq.m.) approx.



1st Floor  
879 sq.ft. (81.6 sq.m.) approx.



2nd Floor  
611 sq.ft. (56.7 sq.m.) approx.



TOTAL FLOOR AREA : 2360 sq.ft. (219.2 sq.m.) approx.

Measurements are approximate. Not to scale. Illustrative purposes only  
Made with Metropix ©2025